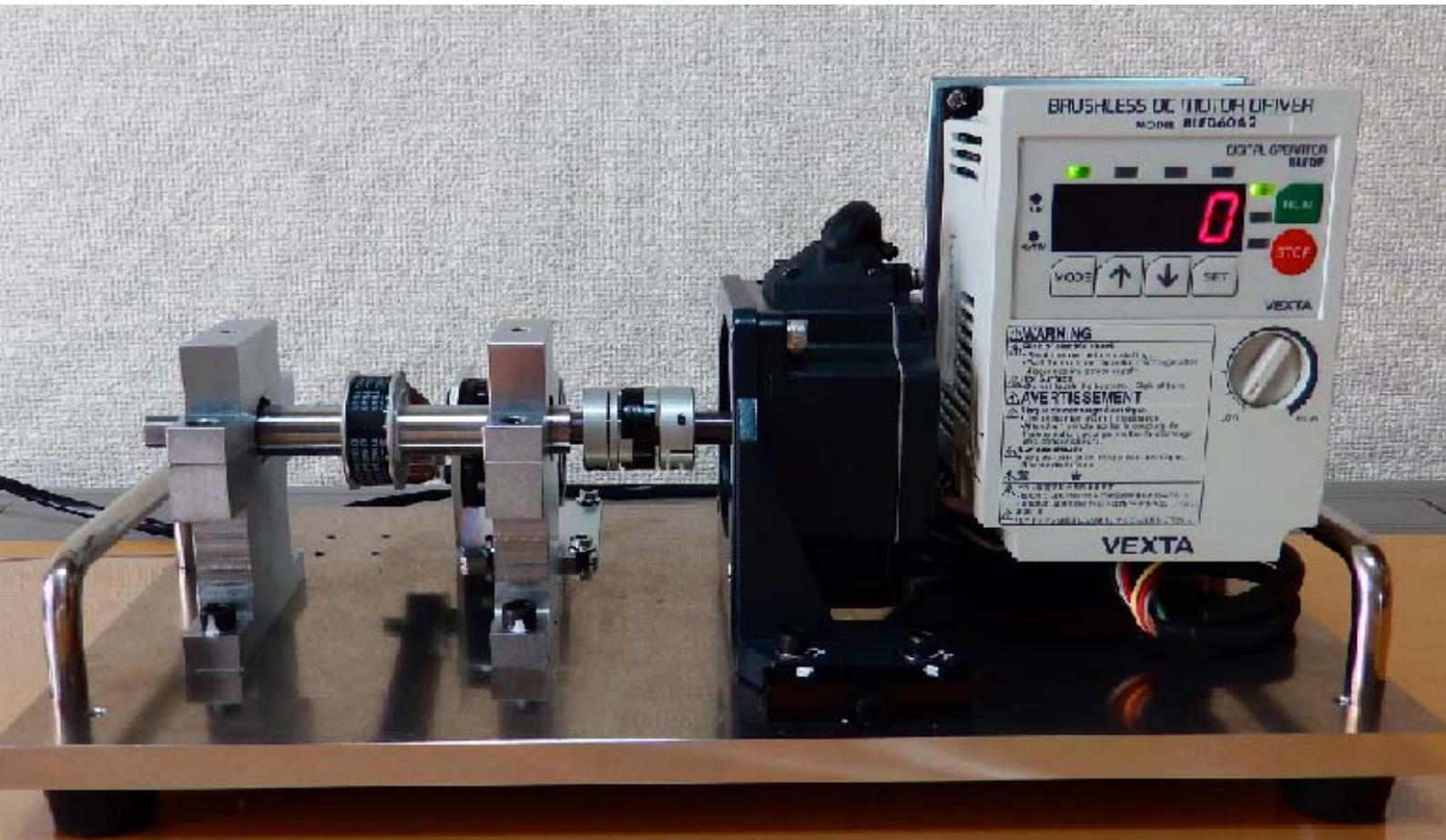


# Bearing Rotary Kit

## BRK-6X

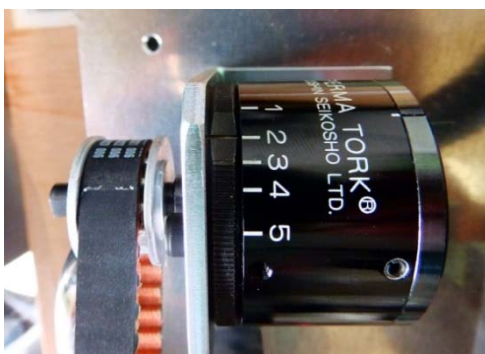


BRK-6x is designed for to monitor a condition of bearings which includes outer-race damage and boll damages etc. and also for to train fresh-engineer who want to start handling the diagnosis devices.

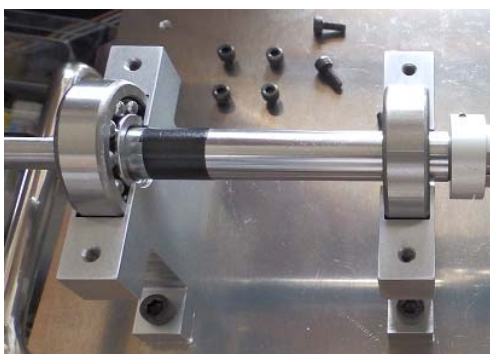
BRK-6x is equipped with a programmable speed controller, a brushless 60W DC motor and torque load devices.

BRK-6x can run up to 4000rpm with no load and 1800rpm with load.

Parma Torque (Load)



Damaged Bearing Unit



Speed Controller



# ■ Specification

Description	Specification		Note
Model Type	BRK-61	BRK-62	
Input Voltage	AC100-120V 1Φ 50/60Hz	AC200-240V 1Φ 50/60Hz	
Motor	BLF46A	BLF46C	0~4000rpm, Brushless
Rated Output	60W		
Programmable Controller	BLFD60A2	BLFD60D2	
Parma Torque	HC2-25J Adjustable 0.01~0.18N・m		5 steps
Bearing Sets with shaft	Set 1 : Normal Set (NSK 1302) Set 2 : Abnormal Set (NSK 1302)		Outer-Race Damage
Dimension & Weight	370(W) x 212(D) x 183(H) Approx. 7kg		

BLF46□ and BLFD60□2 are UL recognized and Listed devices.  
This BRK-6□ is submitted to change without notice for improvement.

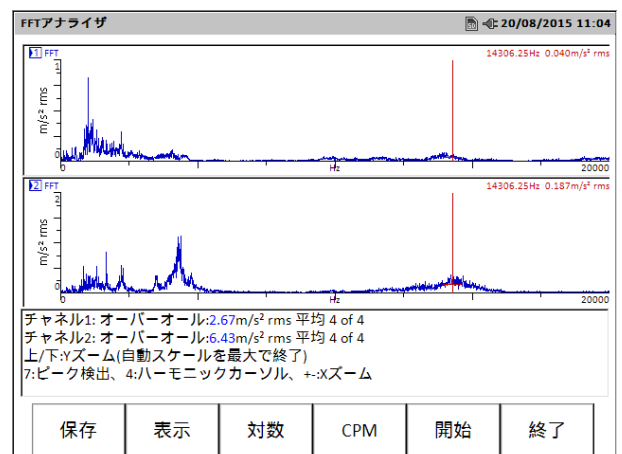
# ■ Data

Overall [A]		Overall [B]	
1	0.818 g p 0.421 mm/s rms 6.54 μm pp	0.522 BCU	
2	0.909 g p 0.520 mm/s rms 12.6 μm pp	1.93 BCU	

ファイアキーまたは[開始]を押して測定を開始します。

平均 表示 保存 開始 終了

By using measuring device which has BCU (Bearing Condition Unit) parameter, you can pick up a bearing damage in Overall BCU.



By using FFT analyzer, you can diagnosis bearing damage frequencies within range from 5kHz to 10kHz which was produced by outer-race damage.



**Fine Techno Corporation**

15-1-1108 Ukima 1-chome, Kita-ku 115-0051 Tokyo Japan

URL : <http://www.new-ftc.com>

E-mail : [info@new-ftc.com](mailto:info@new-ftc.com)

Phone/FAX : +81 3 6454 9203